

TSEM LADRANG

A *ladrang* is the Lama's household, and the head of the Dharma organisation and centre. As the Lama – who is also the spiritual guide – resides in the *ladrang*, all main spiritual decisions and matters concerning each department of the organisation are discussed and decided here.

Tsem Ladrang is the household of His Eminence Tsem Tulku Rinpoche, Lama and spiritual guide of Kechara House. There is a *ladrang* in Kuala Lumpur, and a *ladrang* in Kathmandu, Nepal to facilitate the growth of Kechara in both locations. They contain His Eminence's personal living quarters, administrative offices for the *ladrang* staff, an audience room for His Eminence to hold meetings and meet students, and a central prayer hall that is dedicated especially towards Kechara House's work and growth.

Ultimately, all funds raised for Tsem Ladrang and all the work done within goes back towards supporting the Dharma work and activities of all the Kechara departments.

Tsem Ladrang and the staff support His Eminence's personal needs. We also plan and support all teachings and Dharma events which His Eminence attends, help to oversee and assist the work of the Kechara departments, and facilitate audiences for students and friends to meet with His Eminence.

Contact Us

JP Thong

Tsem Ladrang (Branch)
No. 8-2, Jalan PJU 1/3D,
SunwayMas Commercial Centre,
47301 Petaling Jaya,
Selangor, MALAYSIA.

[M] +6012 207 3503

[T] +603 7722 1967

[F] +603 7728 5188

[E] jpthong@tsemladrang.com

[E] mail@tsemladrang.com

[W] www.kechara.com/ladrang



TSEM LADRANG

དགའ་གར་ཕྱུ་ཁང་ཚོམས་ལྷ་བླང་།

KEY PEOPLE

Liaisons



JP Thong

Director of Operations



Datuk May Phng

Executive Director



Ooi Beng Kooi

Personal Assistant and
Director of e-Division



Chuah Su Ming

Director of Marketing and
Public Relations



Loh Seng Piow

Personal Attendant

Assistant to Director of Operations



Andrew James Boon

Personal Attendants



KB Thapa



Monlam



Joy Kam

e-Division



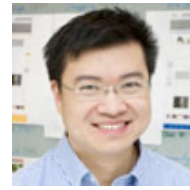
Shin Tan



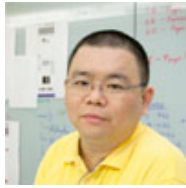
Khong Jean Ai



Wan Wai Meng



Lionel Chew



Lew Kwan Leng



Kok Wah Ying

Marketing and Public Relations



James Long

Administration, Finance and Operations

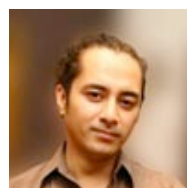


Bonita Khoo

Household Affairs and Special Projects



Wendy Ho



Justin Ripley